

# MERCURY<sup>89</sup> T O P A Z





Topaz LTS in Silver Clearcoat Metallic with Graphite Clearcoat Metallic lower Tu-Tone. Some features shown may be optional. See option list page 25.

## **TOPAZ. DESIGNED FOR COMFORT. ENGINEERED FOR CONTROL.**

The first thing you notice about Topaz is its shape—smooth, attractive, distinctive. And beyond this contemporary exterior, Topaz delivers a level of comfort and control that helps create an enjoyable driving experience. With features such as front-wheel drive, a fully independent suspension, comfortable seating for five and optional all-wheel drive, Topaz offers a versatility that's tough to beat. There's even an optional driver air bag Supplemental Restraint System.

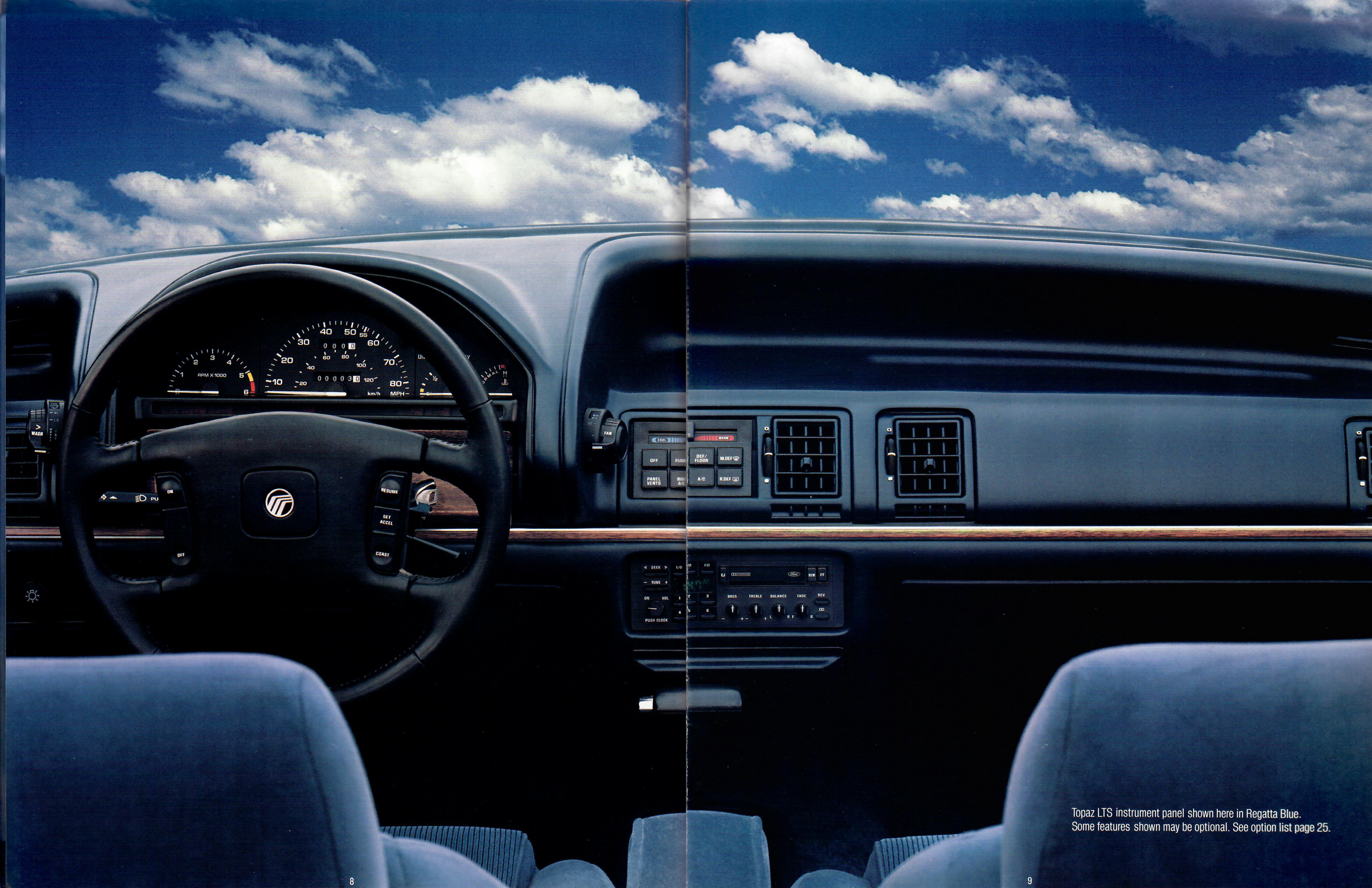
In the following pages, we will give you an up close and personal look at this impressive automobile which so neatly blends comfort and control. And, we trust that once you learn more about it and have the opportunity to experience it firsthand at your Mercury dealer, you will share our enthusiasm for this versatile sedan.

Mercury Topaz. Where comfort and control are one.



The luxurious Topaz LTS includes a six-way power adjustable driver's seat, speed control, leather-wrapped steering wheel, air conditioning and an electronic AM/FM stereo radio with cassette and Premium Sound. Interior shown here in Regatta Blue cloth. Some features shown may be optional. See option list page 25.





Topaz LTS instrument panel shown here in Regatta Blue.  
Some features shown may be optional. See option list page 25.

## IT TAKES MORE THAN GOOD LOOKS TO MAKE A BEAUTIFUL AUTOMOBILE.

The sleek shape of Mercury Topaz actually plays an important role in its performance. This smoothly contoured body manages the flow of air over, under and around the vehicle to help improve handling, reduce wind noise and improve fuel efficiency\* at highway speeds.

To further complement the LS model's formal look, standard equipment includes a luggage rack on the rear deck. There are convenient remote release controls for the rear decklid and fuel-filler door. Another nice touch is the illuminated entry system which automatically turns on the interior lights when you lift the driver's outside door handle. LS is also equipped with the sport suspension package which includes 185/70HR14 steel-belted radial tires.

\*See EPA statement page 27.



Topaz LS in Oxford White. Some features shown may be optional. See option list page 25.



Ergonomically designed controls for power windows and door locks are easy to use.

Topaz LS interior in Smoke. Some features shown may be optional. See option list page 25.

## WITH LUXURY THE AIM, TOPAZ LS HAS AN INTERIOR THAT'S RIGHT ON TARGET.

Luxury surrounds you inside Topaz LS. Up front there are fully adjustable seats done in a cloth upholstery with a fold-down center armrest. Other standard items include power rack-and-pinion steering, power brakes, power door locks, power windows, electronic AM/FM stereo radio with cassette, tilt steering wheel and dual illuminated visor mirrors.

The designers of Topaz employed ergonomics—the study of the interaction between people and machines—to ensure that the instrumentation is easy to read and the controls are easy to reach and operate. The goal was to create a comfortable environment which enhances driver control. The fingertip speed control feature (see photo page 8), which is



standard on LS models, is a good example of how ergonomics benefits the driver. All of the controls are conveniently integrated into the center of the steering wheel.

A front seat motorized shoulder safety belt system to help restrain front seat occupants is standard. When you shut the door and turn on the engine, the shoulder belt automatically moves into place across your chest. All you have to do is fasten your manual lap belt. There's also the optional driver air bag Supplemental Restraint System which can be ordered on four-door Topaz models. When this system is ordered, the motorized safety belts are replaced by manual three-point safety belts. (See page 23 for more detailed information.)

## TOPAZ XR5. A MORE EXCITING WAY TO GET WHERE YOU'RE GOING.

There's no mistaking the intent of XR5. It's got performance written all over it. There's a bold black grille, black window moldings, quad-band lower bodyside tape stripes and a rear decklid spoiler. Under the hood sits a 2.3-liter HSO engine — the most powerful engine available with Topaz. It is equipped with multi-port electronic fuel injection for efficient performance\* and coupled with a smooth-shifting five-speed manual transmission. A three-speed automatic is optional.

A good performing car doesn't just accelerate briskly. It must also have the proper handling characteristics. That's why you'll appreciate XR5's tuned, fully independent suspension. It includes nitrogen gas-pressurized struts and a front stabilizer bar for flatter, more precise cornering. Performance steel-belted radial tires on cast-aluminum wheels round out this impressive sports model.

\*See EPA statement page 27.



Topaz XR5 in Black with Medium Dark Titanium lower Tu-Tone. Some features shown may be optional. See option list page 25.





Topaz XR5 interior in Smoke cloth. Some features shown may be optional. See option list page 25.

## AN INTERIOR DESIGNED TO HANDLE THE CURVES.

The interior of XR5 is designed to get the most out of a driver. Up front are sport bucket seats designed to be firm yet comfortable. They feature raised thigh and side bolsters and four-way adjustable head restraints. Power lumbar supports on the driver's seat give added support and help reduce lower back fatigue. A six-way power driver's seat is also available on an optional basis. And to help you arrive at your most comfortable driving position, XR5 comes with a tilt steering wheel. It's also leather-wrapped to provide a comfortable grip. Between the front seats is a center armrest for added comfort and a console with a convenient cassette storage compartment.

The rear seating area is surprisingly spacious and affords outboard passengers an extra measure of comfort with a contoured seatback.

The sporting theme of Topaz XR5 is enhanced by attractive cloth upholstery on the seats and cloth inserts on the door panels. It immediately distinguishes the XR5 from every other model in the Topaz line.

And because there are times when even the most avid driving enthusiast would prefer to listen to music rather than the sound of the engine going through the gears, Topaz XR5 comes with an electronic AM/FM stereo radio with a cassette player and four speakers.

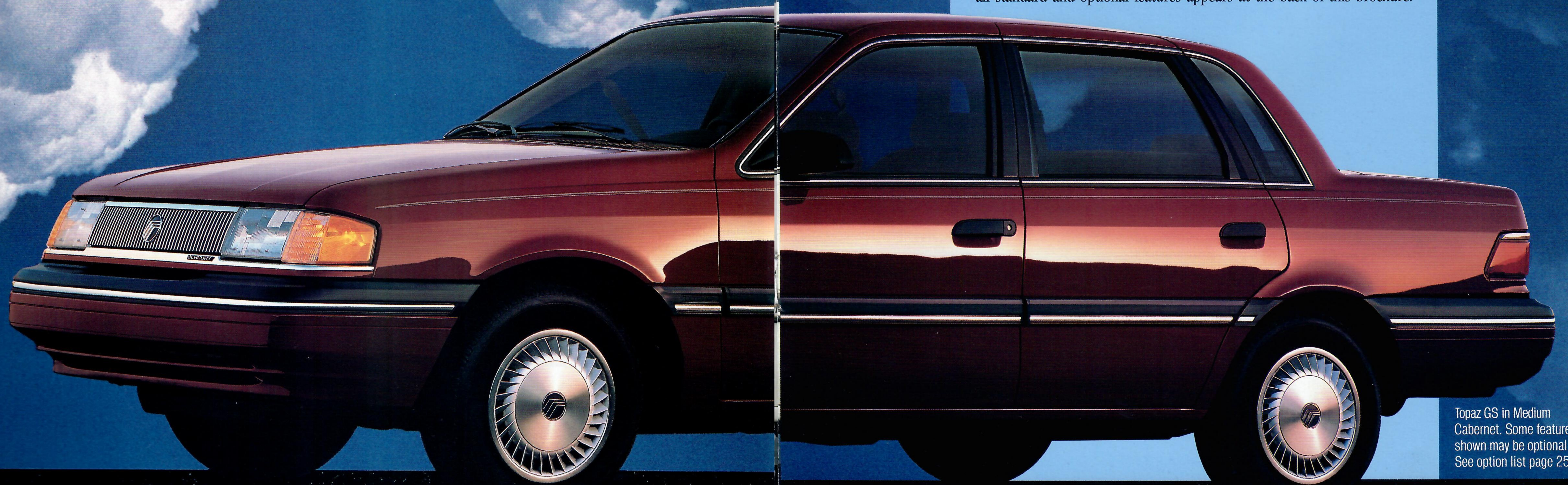


XR5's driver's seat features power lumbar supports for added comfort.

## TOPAZ GS. ONE PLEASANT SURPRISE AFTER ANOTHER.

Topaz GS features include aerodynamically styled halogen headlamps, power brakes, power rack-and-pinion steering, tinted glass and dual power side mirrors. Inside the GS, you'll find a four-spoke steering wheel, tachometer, individual reclining front seats with adjustable head restraints and front seat motorized shoulder safety belt system.

There's also a comprehensive list of optional equipment. To streamline the ordering process, we've grouped certain combinations of optional equipment into Preferred Equipment Packages. For example, the Topaz GS sedan can be ordered with Preferred Equipment Package 363A. It includes automatic transmission, air conditioning, electric decklid and fuel-filler door releases, the light group (engine compartment light, trunk light, overhead map light and headlamps-on chime), a tilt steering wheel and a front center armrest. Ordering these popular items this way is easy and saves money compared to ordering them individually. Complete information on all standard and optional features appears at the back of this brochure.



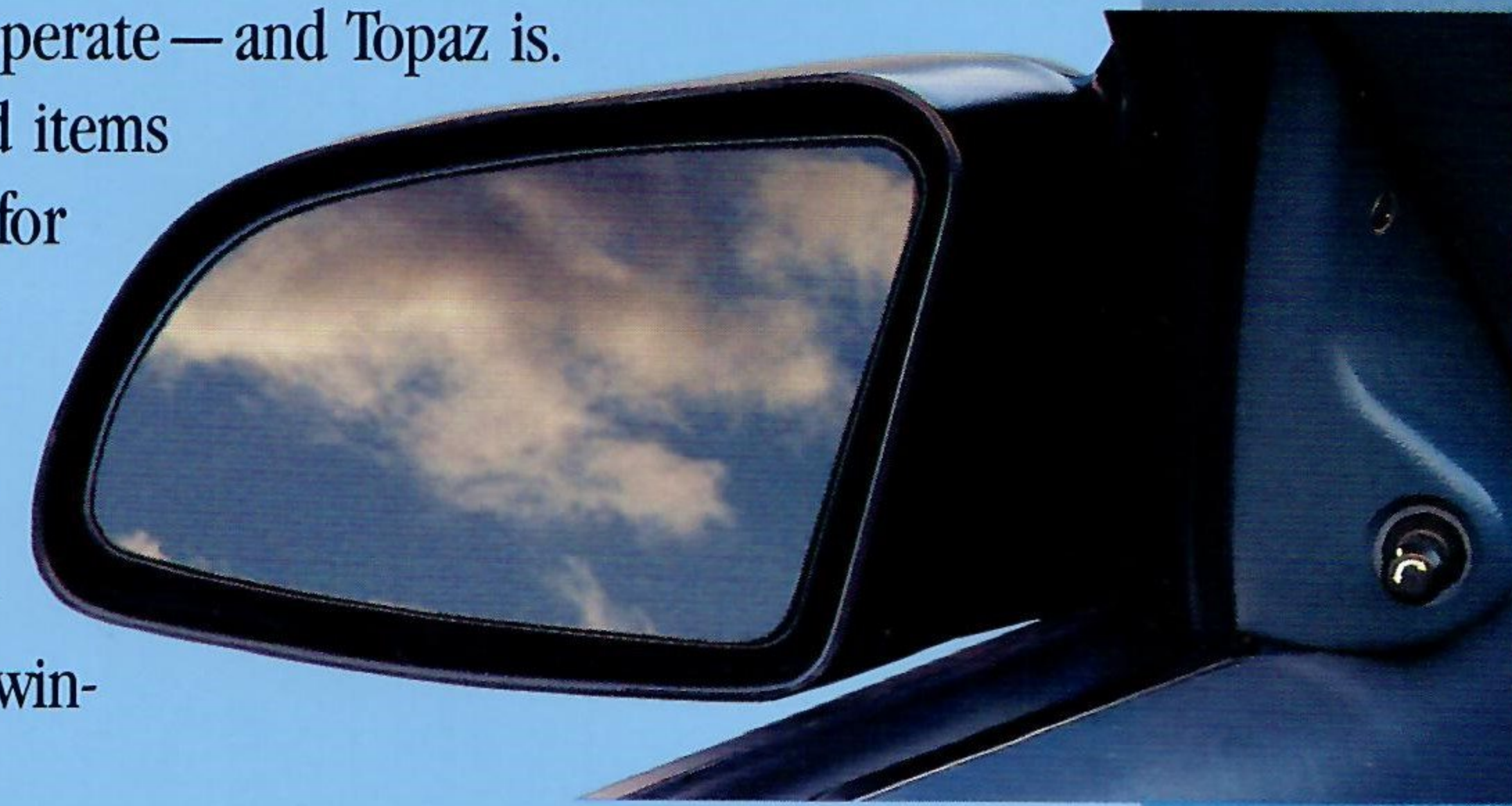
Topaz GS in Medium Cabernet. Some features shown may be optional. See option list page 25.

## AN AUTOMOBILE MUST FIRST BE COMFORTABLE.

No matter how modern or stylish an automobile may be, it must be comfortable and convenient to operate—and Topaz is.

Topaz comes with standard items that you might pay a premium for on other cars, such as power rack-and-pinion steering, power brakes, dual remote power side mirrors, interval wipers, a four-speed heater/defroster fan, side window demisters and tinted glass.

Also offered as standard on LTS and LS models and optional on the GS and XR5 is the Power Lock Group. It includes power door locks, as well as remote decklid and fuel-filler door releases. The Comfort and Convenience Group includes lights for the ashtray, glovebox, luggage compartment, engine compartment and rear door courtesy light switches. Remote decklid release, remote fuel-filler door release and center armrest are also included.



Standard dual power mirrors make adjustments easy.



Optional six-way power driver's seat (standard on LTS) makes it easy to find your most comfortable driving position.

Topaz GS, LS and XR5 come standard with comfortable fully adjustable front seats with a manual recline feature. A six-way power driver's seat is standard on the LTS and available as an option on all other models. It helps a driver find the most comfortable driving position.

Each Topaz model is outfitted in its own particular style of upholstery. The front and rear seats feature full cloth upholstery on the LTS, LS and XR5 models while the GS features a combination of vinyl and cloth. Full vinyl is also available as an option on GS models.

Another thoughtful touch on every Topaz is the inclusion of visor mirrors. They are mounted on the backside of both the driver and passenger side sun visors.

One example of how technology translates into convenience is the Topaz standard diagnostic alert module. This system monitors eleven different items while the engine is running and reports information to the driver via a warning light bar located just below the main instrument cluster.



Standard diagnostic alert module relays vital information via a warning light bar on the instrument panel.

Topaz's passenger compartment is well suited for audio entertainment. The GS model comes with an electronic AM/FM stereo radio

with four speakers. Optional on GS and standard on LTS, LS and XR5 is an electronic AM/FM stereo radio with cassette. Both systems are available with the Premium Sound option (standard on LTS). It includes a powerful amplifier and premium speakers.

A handy feature on LTS, LS and XR5 models is a cargo tie-down net in the trunk. It can help keep small articles from rolling about as you drive.

Fingertip speed control is a convenient feature that is especially nice to have during long trips on the highway. On Topaz, the controls are integrated into the center of the steering wheel for ease of operation. Fingertip speed control is a standard feature on LTS and LS Topaz models

and available on an optional basis on the GS and XR5 models. However, this feature is not compatible with the optional driver air bag Supplemental Restraint System because the air bag requires a special steering wheel housing. When you order the LTS or LS with the Supplemental Restraint System, speed control is deleted.



Cargo tiedown net on LTS, LS and XR5 is standard.

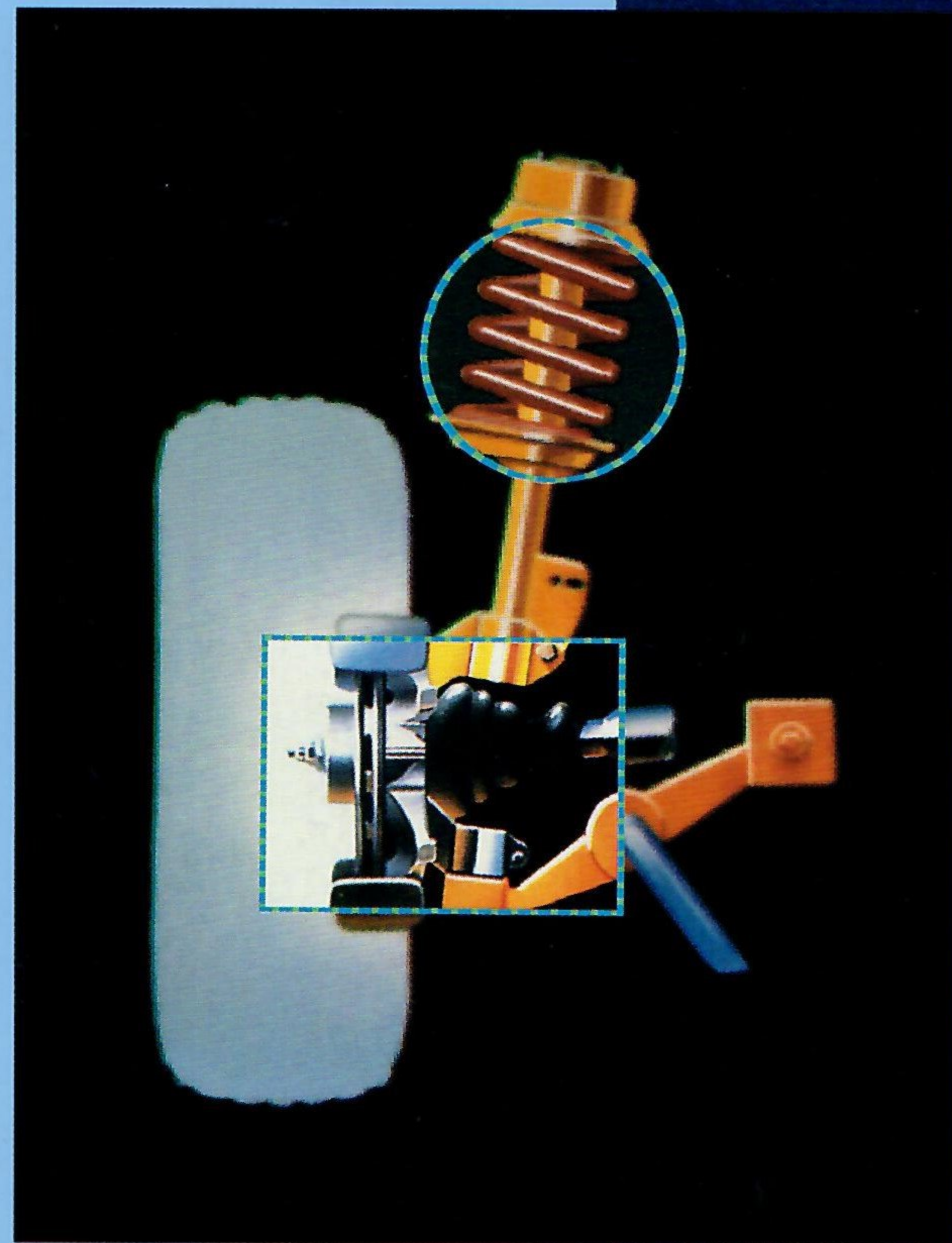
## ENGINEERED TO SMOOTH OUT THE ROAD WITHOUT CUTTING CORNERS.

There was a time when only sports cars were expected to have a suspension system as sophisticated as the one on which Topaz rides. It is fully independent front and rear. Up front you'll find nitrogen gas-pressurized MacPherson struts with strut-mounted coil springs and a stabilizer bar for flatter cornering. The rear suspension is an independent parallel four-bar design with coil springs and nitrogen gas-pressurized MacPherson struts. This advanced suspension system provides a smooth, comfortable ride while still providing the driver with a good feel of the road.

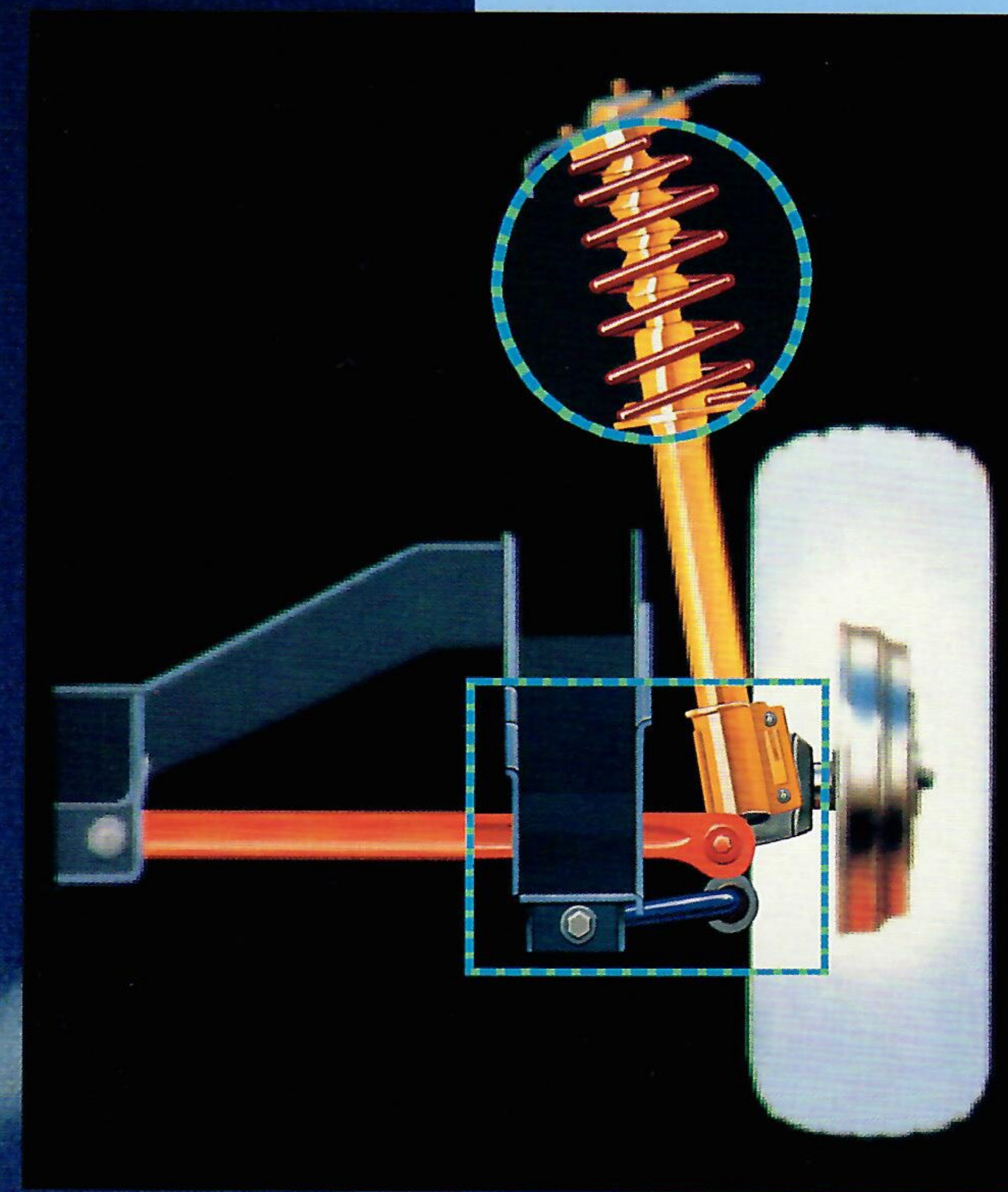
For added versatility, Topaz may be ordered with an optional all-wheel-drive system for better traction in rain, snow or mud. It allows the driver to switch into or out of all-wheel drive even while moving. The system is designed for those who want greater traction capabilities for dealing with slippery road conditions. It is not intended for off-road use or use on dry pavement. A limited slip differential in the

rear also helps reduce wheel spin.

The driver air bag Supplemental Restraint System (shown on facing page) combined with properly used safety belts can provide extra protection against facial and chest injuries in certain front-end impacts. The air bag deployment is very fast; it inflates in approximately 40 milliseconds after receiving a signal from the crash sensors.



The independent front suspension features nitrogen gas-pressurized struts, coil springs and stabilizer bar.

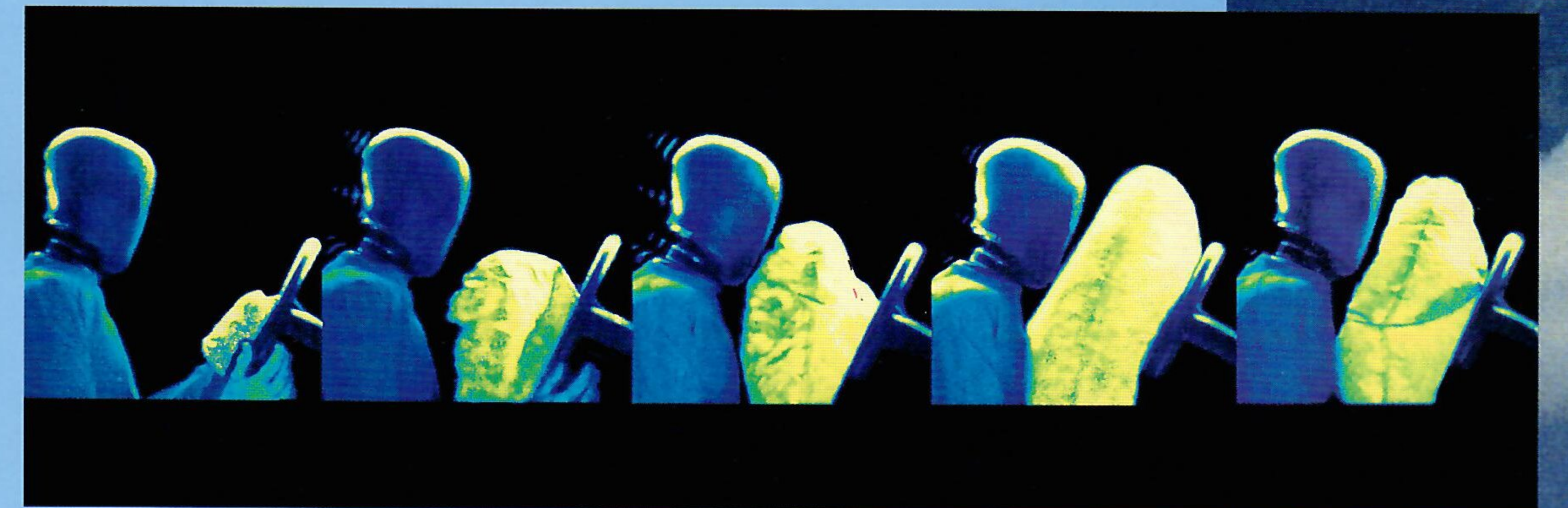


The independent rear suspension features a four-bar design with nitrogen gas-pressurized struts and coil springs.

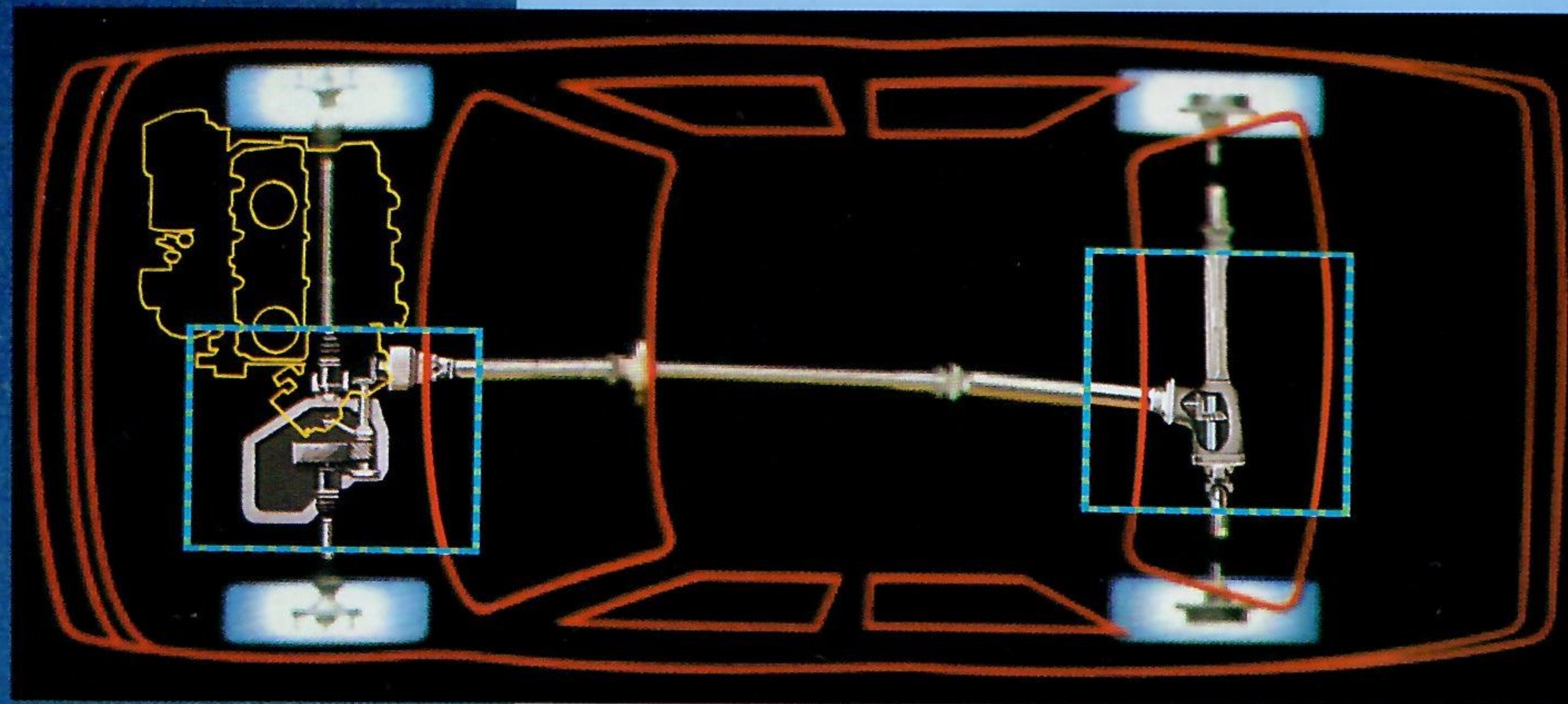
Upon inflation, the rubber coated nylon air bag helps cushion the impact to the driver's face and chest, supplementing the restraint provided by the safety belts. The bag then rapidly deflates. It is available as an option on four-door Topaz models.

### Selected Safety Features

The following is a partial list of the safety features incorporated into every Topaz: Safety belts for all seating positions ■ Child safety seat tether anchors behind the rear seats ■ Flame-resistant interior materials ■ Energy-absorbing materials in the dashboard, armrests, front seatback tops and sun visors ■ Impact-absorbing laminated safety glass in the windshield ■ Safety-designed radio control knobs and pushbuttons ■ Inside rearview mirror designed to yield upon impact ■ Energy-absorbing steering column ■ Front pillars and roof designed to meet a static force test equal to 5,000 pounds or 1½ times the car's weight ■ High strength steel beams in each door designed to withstand 7,000-pound push test ■ Door latches designed to withstand a push-open load in excess of 2,000 pounds to help keep doors closed in the event of an impact ■ All brake lines are corrosion resistant.



Shown here is a representation of the driver air bag Supplemental Restraint System deployment sequence. It was not made during an actual test.



A versatile all-wheel-drive system is available on an optional basis. It provides additional traction in snow, rain and mud. Power from the engine is transmitted to a rear drive shaft from the final drive gear in the transaxle. A limited-slip differential at the rear helps reduce wheel spin.

## SELECTED OPTIONAL AND STANDARD FEATURES.

<b>ENGINES</b>		
Type	2.3L HSC Inline 4-cylinder	2.3L HSO Inline 4-cylinder
Displacement	2.3 liters	2.3 liters
Horsepower (SAE net)	98 @ 4400 rpm	100 @ 4400 rpm
Torque (SAE net)	124 lb-ft @ 2200 rpm	130 lb-ft @ 2600 rpm
Fuel delivery	Multi-port electronic fuel injection	Multi-port electronic fuel injection
Compression ratio	9.0:1	9.0:1
Engine control	EEC-IV, electronic engine control	EEC-IV, electronic engine control
<b>TRANSMISSIONS</b>		
Manual	Five-speed with self-adjusting clutch linkage	
Automatic	Three-speed with 62 percent mechanical drive in second gear and 93 percent mechanical drive in third	
<b>SUSPENSION</b>		
Front	Independent MacPherson nitrogen gas- pressurized struts with strut-mounted coil springs, stabilizer bar, forged lower control arms and cast steering knuckles	
Rear	Independent parallel four-bar with MacPherson nitrogen gas-pressurized struts, coil springs, parallel suspension arms and double bayonet tie rods	
<b>STEERING</b>		
Type	Power-assist rack-and-pinion with 18.4:1 overall ratio on center	

Based on official 1989 MVMA specifications.

<b>BRAKES</b>		
Type	Dual hydraulic (diagonally linked front to rear) with power assist	
Front	9.2-inch disc	
Rear	8.0-inch drum	
Brake swept area	217.2 sq. in.	
<b>DIMENSIONS (in inches)</b>		
	<b>TWO-DOOR</b>	<b>FOUR-DOOR</b>
Wheelbase	99.9	99.9
Overall length	176.7	177.0
Overall height	52.8	52.9
Overall width	68.3	68.3
Track, front/rear	54.9/57.6	54.9/57.6
Headroom, front/rear	37.5/36.9	37.5/37.0
Legroom, front/rear	41.5/36.0	41.5/36.0
Shoulder room, front/rear	53.9/54.0	53.9/53.4
Hiproom, front/rear	48.8/51.8	48.8/51.0
<b>CAPACITIES</b>		
Cargo volume	13.2 cu. ft.	12.9 cu. ft.
Fuel	15.4 gal., 14.2 gal. with AWD option	
Oil	4 qt.	4 qt.
Engine coolant	8.1 qt.	8.1 qt.
Curb weight	2567 lb.	2606 lb.

<b>MERCURY TOPAZ</b>	<b>GS</b>	<b>XR5</b>	<b>LS</b>	<b>LTS</b>
<b>FUNCTIONAL FEATURES</b>				
Driver air bag Supplemental Restraint System (four-door only)	0	—	0	0
2.3-liter HSC engine	S	—	S	—
2.3-liter HSO engine	—	S	—	S
Five-speed manual transmission	S	S	S	S
Three-speed automatic transmission	0	0	0	0
All-wheel drive (requires automatic transmission)	0	—	0	0
Maintenance-free 58 amp-hr H.D. battery	S	S	S	S
Electronic voltage regulator	S	S	S	S
Aluminized exhaust system corrosion protection	S	S	S	S
Self-adjusting clutch linkage	S	S	S	S
Power-assist rack-and-pinion steering	S	S	S	S
Sport/Touring suspension	—	S	S	S
Tinted glass	S	S	S	S
Electric rear window defroster	0	S	S	S
Side window demisters	S	S	S	S
Engine block heater	0	0	0	0
Rear child-proof locks	S	—	S	S
<b>EXTERIOR FEATURES</b>				
Aero-halogen headlamps	S	S	S	S
Five-mph impact bumpers	S	S	S	S
Corrosion protection including precoated steel, cathodic electrocoat paint primer and electrostatically applied paint	S	S	S	S
Lower bodyside protective urethane coating	S	S	S	S
Rear decklid luggage rack	0	—	S	S
<b>INTERIOR COMFORT AND CONVENIENCE FEATURES</b>				
Air conditioning	0	0	0	S
Low-back individual reclining front seats in cloth	S	—	S	—
Sport bucket seats	—	S	—	S
Six-way power driver's seat	0	0	0	S
Black leather-wrapped steering wheel	—	S	—	S
Tilt steering wheel	0	S	S	S
Speed control	0	0	S	S
Power flow-through ventilation	S	S	S	S
Four-speed heater/defroster	S	S	S	S

S — Standard feature    0 — Optional feature

	<b>GS</b>	<b>XR5</b>	<b>LS</b>	<b>LTS</b>
Interval windshield wipers	S	S	S	S
Digital clock	S	S	S	S
Remote decklid release	0	S	S	S
Remote fuel-filler door release	0	S	S	S
Power lock group: Includes door locks, fuel-filler door and decklid releases	0	0	S	S
Power windows	0	—	S	S
Cargo tiedown net	—	S	S	S
Illuminated entry system: Activates interior lights when outside door handle is pulled	—	—	S	S
Light group: Includes engine compart- ment light, trunk light, overhead map light and headlamps-on chime	0	S	S	S
<b>SOUND SYSTEMS</b>				
Electronic AM/FM stereo with four speakers (may delete for credit)	S	—	—	—
Electronic AM/FM stereo with cassette and four speakers	0	S	S	S
Premium Sound — amplifier and premium speakers	0	0	0	S
<b>INSTRUMENTATION</b>				
Analog instrumentation with speedometer, tachometer, engine coolant temperature gauge, fuel gauge and trip odometer	S	S	S	S
<b>WHEELS AND TIRES</b>				
P185/70R14 black sidewall, all-season, steel-belted radial tires	S	—	—	—
P185/70R14 white sidewall, all-season, steel-belted radial tires	0	—	—	—
P185/70R14 black sidewall, performance steel-belted radial tires	—	S	S	S
P185/70R14 white sidewall, performance steel-belted radial tires	0	—	0	—
Luxury wheel covers	S	—	S	—
Polycast wheels	0	—	0	—
Spoke wheel covers	0	—	0	—
Cast-aluminum wheels	—	S	—	S
<b>COMFORT/CONVENIENCE GROUP</b>				
Includes light group, locking fuel-filler door with remote release and remote decklid release	0	S	S	S

To make ordering easy we've grouped certain options together into the Preferred Equipment Packages listed below. And priced them to cost you less than if they were purchased separately.\*

TOPAZ GS	Preferred Equipment Package 363A
Electric decklid and fuel-filler door releases	•
Light group	•
Tilt steering wheel	•
Automatic transmission	•
Manual air conditioner	•
Front center armrest	•
TOPAZ XR5	Preferred Equipment Package 371A
Fingertip speed control	•
Six-way power driver's seat	•
Power lock group	•
Premium Sound System	•

\*Specific content is subject to change throughout model year. Consult your dealer for the most up-to-date information.

#### TOPAZ COLORS

##### Standard Exterior Colors GS and LS

Black  
Oxford White  
Medium Cabernet  
Spinnaker Blue  
Almond

##### Optional Clearcoat Colors GS and LS

Silver Clearcoat Metallic  
Graphite Clearcoat Metallic  
Wild Strawberry Clearcoat Metallic  
Medium Sandalwood Clearcoat Metallic  
Light Sandalwood Clearcoat Metallic  
Twilight Blue Clearcoat Metallic  
Crystal Blue Clearcoat Metallic

##### Standard Interior Colors

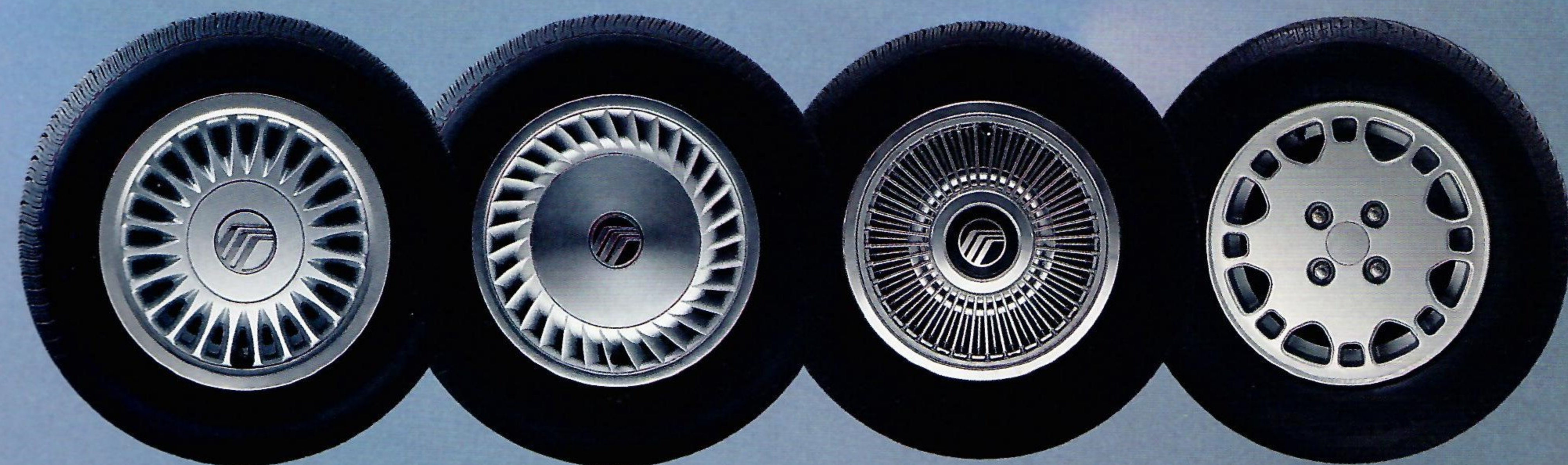
Smoke  
Regatta Blue  
Sand Beige  
Scarlet

##### Exterior Colors XR5 and LTS\*\*

Wild Strawberry Clearcoat Metallic  
Graphite Clearcoat Metallic  
Twilight Blue Clearcoat Metallic  
Oxford White  
Silver Clearcoat Metallic  
Black

\*\*All feature complementing lower Tu-Tone with quad-band tape stripes on XR5 and tri-band tape stripes on LTS.

Left to right: Polycast wheel, luxury wheel cover, spoke wheel cover, styled cast-aluminum wheel.



Customer satisfaction with Mercury cars may be attributed to the personalized attention given by the sales and service staffs at Lincoln-Mercury dealerships and to the Lincoln-Mercury Quality Commitment program. Its goal is to achieve outright industry leadership in customer satisfaction. We want Lincoln-Mercury customers to be the most pleased in the entire automotive industry. An integral part of the Lincoln-Mercury Quality Commitment is the 6-year/60,000-mile powertrain and 6-year/100,000-mile corrosion warranty. The warranty is limited, and certain restrictions and a deductible apply. Ask your Lincoln-Mercury dealer for a copy of the warranty and take time to read it. Genuine Ford and Motorcraft original equipment replacement parts are engineered and manufactured to Ford's high specifications.

**Motorcraft**  
QUALITY PARTS

They're your best assurance of quality and long-term satisfaction because these replacement parts meet the same high standards as those installed in production. The optional Ford Extended Service Plan covers selected components on new Mercury cars for longer than the vehicle's basic warranty. The cost is so moderate for the protection offered that it could pay for itself the first time it is needed. Ask your Lincoln-Mercury dealer for complete details of the plan, which is available on cars sold and normally operated in the 50 United States and Canada.



the Life-  
on your



Participating Lincoln-Mercury dealers are now offering time Service Guarantee, which guarantees their work Mercury Topaz for as long as you own it. This means that you pay for a covered repair once and never again. If it ever has to be fixed again, the repairing dealer will fix it free. Free parts. Free labor. Ask your Lincoln-Mercury dealer for a copy of this limited warranty, and take time to read it.

**Ford-paid repair programs after the warranty period** Sometimes Ford Motor Company offers adjustment programs to pay all or part of the cost of certain repairs. These programs are intended to assist owners and are in addition to the warranty or to required recalls.

**Technical Service Bulletins** All vehicles need repairs during their lifetime. Sometimes Ford issues Technical Service Bulletins (TSBs) and easy-to-read explanations describing unusual engine or transmission conditions which may lead to costly repairs, the recommended repairs and new repair procedures. Often a repair now can prevent a more serious repair later. Ask Ford Motor Company or your Lincoln-Mercury dealer about Ford-paid repair programs and TSBs relating to your Mercury Topaz.

To get copies of materials for your Topaz or the vehicle of interest to you, call Ford toll-free at 1-800-241-3673. In Alaska or Hawaii, call 1-800-241-3711. In Georgia, call 1-800-282-0959, or write Ford at: Ford Customer Information System, Post Office Box 95427, Atlanta, GA 30347. Please include your name and address, year, make, model and vehicle identification number, as well as engine size.

**EPA statement** 1989 EPA mileage estimates were unavailable when this publication was printed. The 1989 Mercury Topaz, however, should post good mileage figures. Ask your Lincoln-Mercury dealer for the latest information. **Buckle up— together we can save lives.** Buy or lease your Topaz from your Lincoln-Mercury dealer.

Specifications and descriptions used were in effect when this publication was approved for printing.

Lincoln-Mercury Division reserves the right to discontinue options at any time or change specifications, equipment or designs without notice and without incurring obligation.

Standard and optional equipment listed is subject to change. Some features described are optional at extra cost. Some options are required in combination with other options.

Availability of some features may be subject to a slight delay.



# MERCURY

WHERE COMFORT AND CONTROL ARE ONE



The New Site For Car Brochures

DEZO'S GARAGE